

R-VIT

INSTRUCTION MANUAL

BLITZ

**17300 Railroad Street Unit # B
City of Industry, CA 91748**

**Tel 626 839-8350
Fax 626 839-8340**

WARNING-All images and text in this manual is the property of Blitz Performance Sales, Inc. No part of this manual may be reproduced, stored in retrieval systems, or transmitted in any way without prior written permission of Blitz Performance Sales, Inc.

Disclaimer

- Please read and understand this manual before using this product.
- Blitz North America, Inc. will not be responsible for any damages cause by this product. The buyer of this product will take full responsibility for any damages caused by product.
- If there are any questions about the installation procedure, please contact your dealer or Blitz North America, Inc. Blitz North America, Inc. will not be responsible for any damages done to the vehicle or the product itself. If the product has been misused or abused in anyway, Blitz North America, Inc. will not warranty the product.
- Blitz North America, Inc. has the right to update or change the product without any prior notice.
- On some vehicles, this product will not be able to display all of the information it is intended for.

Warning

Ignoring this indication may cause serious injuries or even death. Please read and understand this section.

- Please install in a well ventilated area. Bad ventilation may cause carbon monoxide poisoning.
- Please do not install in a place which the wire of this product will interfere with your driving. This may cause traffic accidents. Please make sure that all wires are securely attached and away from any moving parts.
- This product, is designed for the use of DC12V only. Please do not use DC24V or 12V * 24V. It may result in fire.
- Please remove negative terminal of the battery before installing this product. Fire, spark and short circuits may occur if battery terminal is not removed.
- When removing negative battery terminal, do not pull on the harness, remove from the plug.
- If any strange noise or smell occurs, please discontinued the use of the product immediately.
- Do not operate this product while driving your vehicle.

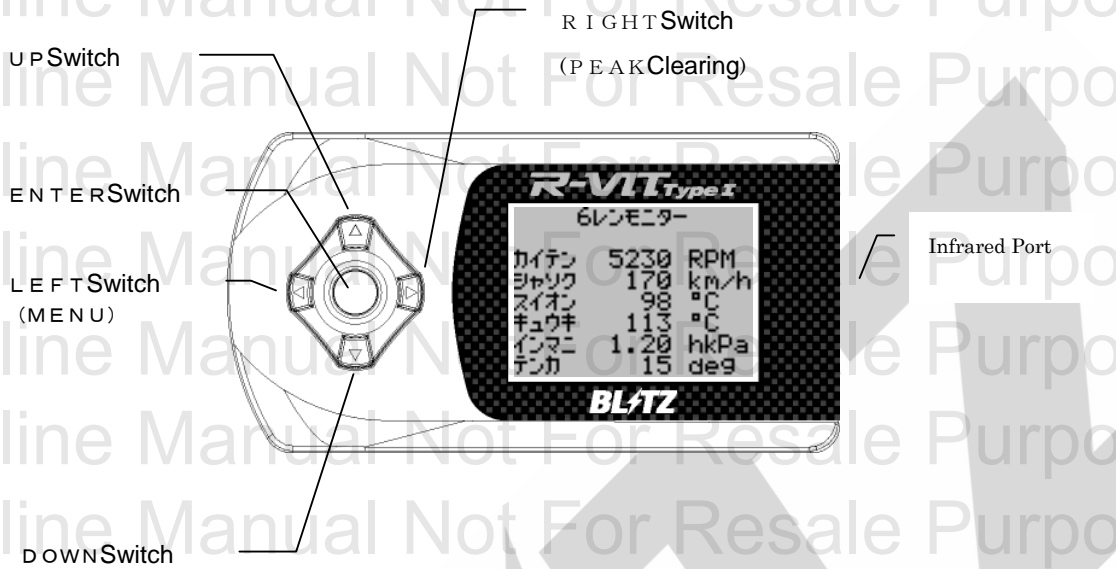
Note

Ignoring these indications may cause damage to the product. Please read and understand this section.

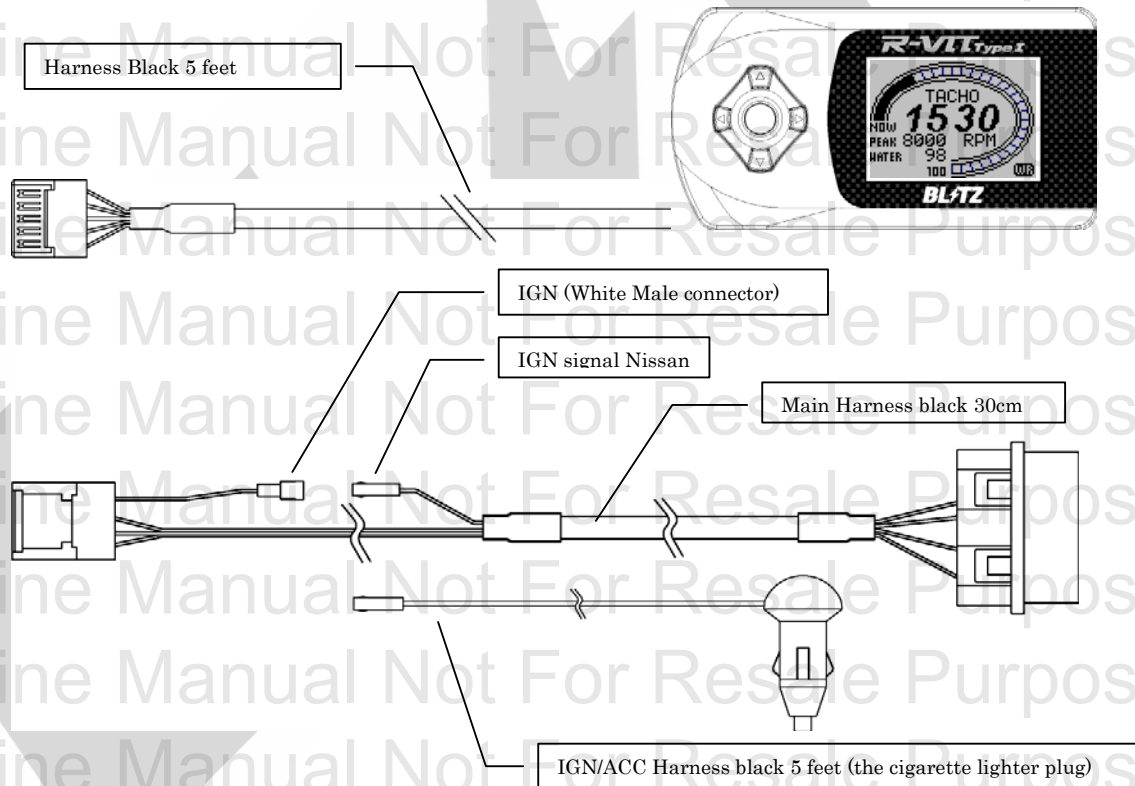
- Please do not drop the product.
- Please do not disassemble the product.
- If you see any prior damages before installing the product, please contact your dealer.
- Please do not install in areas where temperature might be high and also do not install in areas with water or liquid.
- Ignoring these warnings might cause the product to malfunction. Blitz North America, Inc. will not be responsible for these damages and will not warranty any products that have been misused or mishandled.

WARNING-All images and text in this manual is the property of Blitz Performance Sales, Inc. No part of this manual may be reproduced, stored in retrieval systems, or transmitted in any way without prior written permission of Blitz Performance Sales, Inc.

1. Description of product



Harness section:



※ On some Nissan vehicles, you have to unplug the IGN wire and change the power source to the cigarette lighter. Type I only.

WARNING-All images and text in this manual is the property of Blitz Performance Sales, Inc. No part of this manual may be reproduced, stored in retrieval systems, or transmitted in any way without prior written permission of Blitz Performance Sales, Inc.

2. Operation method

- Connect the main harness to the diagnostic port.
- Turn key to on position
- Wait until screen turns to manufacturer setting mode. Select manufacturer and press enter.

- If manufacturer setting is not correct, ERROR will appear.
- Change to correct car manufacturer setting and press enter.

ERROR
NO RESPONSE!!
CHECK CAR MAKER
SETTING.
PUSH ANY KEY.

1) Main MENU (main menu)

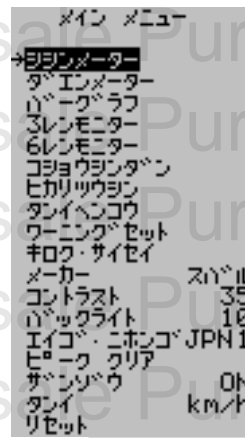
In main menu mode, use the UP and DOWN switch to scroll through the menu. Press ENTER button to select function.

English indication:

NEEDLE METER: Selects the Needle Meter screen.
ELLIPSE METER: Selects the Elliptic meter screen.
BAR GRAPH: Selects the Bar graph screen.
TRIPLE MONI: Selects the Triple monitor screen.
SIXFOLD MONI: Selects the 6 monitor screen.
DIAGNOSIS: Selects the fault diagnosis screen.
OPTICAL COMM: Selects the optical communication setting screen.
UNIT CHANGE: Selects unit modification screen.
WARNING: Warning setting.
REC & PLAY: Record and playback.
MAKER: The vehicle manufacturer is set.
CONTRAST: Contrast adjustment.
BRIGHT: Back light brightness adjustment.
LANGUAGE: Language is set.
PEAK CLEAR: Clears peak value.
STROBO: After image setting of the needle guide meter.
UNIT: The unit of speed and temperature is set.
RESET: Master reset.

Japanese indication:

シシンメーター
 ダエンメーター
 バーグラフ
 3レンモニター
 6レンモニター
 コショウシンダン
 ヒカリツウシン
 タンイヘンコウ
 ワーニング
 キロク・サイセイ
 メーカー
 コントラスト
 バックライト
 エイゴ・ニホンゴ
 ピーククリア
 ザンゾウ
 タンイ
 リセット



2) NEEDLE METER

Scale modification is possible

The Needle meter has 4 different digital displays, the primary Needle unit display, digital unit value, peak value, and a secondary digital unit value.
 It is possible to change the primary unit, secondary unit, and the scale of the Needle meter as shown in the illustration on the right.

To change unit settings:

*Press ENTER and the Primary unit will be highlighted. Use the UP/DOWN button to select the unit you would like to use.

*Press ENTER again to set Primary unit. This will highlight the Secondary unit, use the UP/DOWN button to scroll to the unit you would like to use.

*Press ENTER again to set Secondary unit. This will highlight the scale of the Primary display, use the UP/DOWN button to set the scale higher or lower. Press ENTER to finish.

*Pressing the LEFT button during selection mode will return you to the previous selection.

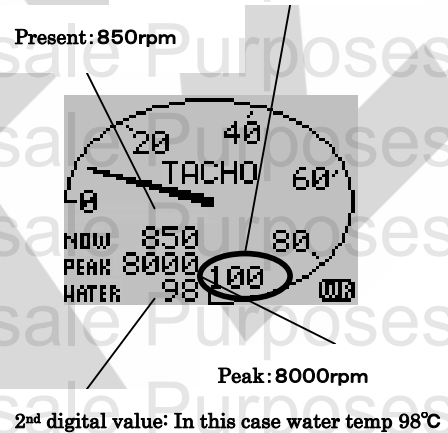
NOTE: If 5 seconds have passed without any actions, the meter will set itself on the selection you have made.

Additional functions:

* Peak clearing: Push RIGHT switch.

* MENU: Push LEFT switch.

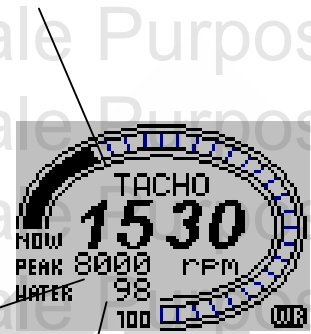
*To scroll through different screens : Push UP or DOWN switch



Present: 1530rpm

3) ELLIPSE METER (Ellipic Meter)

The functions and operation of this setting are identical to the NEEDLE meter.



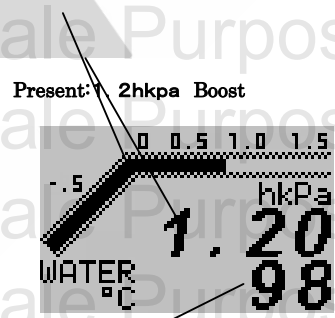
Peak: 8000rpm

2nd digital value: In this case water temp 98°C

Present: 1530rpm

4) BAR GRAPH (Digital bar graph)

The functions and operation of this setting are identical to the NEEDLE meter.



Peak or 2nd digital value: In this case 2nd digital value: 98°C

5) TRIPLE MONITOR (3 readings)

The Triple monitor can simultaneously display 3 different datas. There are 4 different possible way to set up the information:

- * Present value indication
- * Present value + bar graphical representation
- * Present value + peak value
- * Present value (large letter indication)

To change unit setting:

* By pressing ENTER you can scroll through the different settings. Use the UP/DOWN button to switch the unit setting.

* To change the secondary value of the unit, press ENTER until the secondary unit is highlighted, then use the UP/DOWN button to select the different types of display that would accomodate you (there are 4 different types of display illustration of the right). Each secondary unit display can be set differently.

* Press the LEFT button during selection mode will return you to the previous selection.

NOTE: If 5 seconds have passed without any action, the meter will set itself on the selection you have made.

Additional functions:

- * Peak clearing: Push RIGHT switch.
- * MENU: Push LEFT switch.
- * To scroll through different screens : Push UP or DOWN switch

Example:

Needle meter -> elliptic meter -> bar graph -> triple monitor -> sixfold monitor -> guide meter -> and etc....

Present Value Indication

```

TRIPLE MONI
TACHO 5230 RPM
SPEED 170 km/h
WATER 98 °C
  
```

Present value + Bar Graph representation

```

TRIPLE MONI
TACHO 5230 RPM
          ████
SPEED 170 km/h
          ████
WATER 98 °C
          ████
  
```

Present value + Peak value

```

TRIPLE MONI
TACHO 5230 RPM
          8000 PEAK
SPEED 170 km/h
          200 PEAK
WATER 98 °C
          100 PEAK
  
```

Present value + (large letter)

```

TRIPLE MONI
TACHO
RPM      830
SPEED
km/h    0
WATER
°C      98
  
```

6) SIXFOLD MONITOR (6 readings)

The Sixfold monitor can simultaneously display 6 different data. There are 3 different possible ways to set up the information: (As illustrated below)

- * Present value indication
- * Bar graph
- * Present value + peak value

Operation is the same as the Triple monitor.

Present value + Peak value

```
SIXFOLD MONI
TACHO 5230/8000
SPEED 170/ 200
WATER 98/ 105
INTAK 80/ 120
IN-MF 1.20/1.28
IGNIT 15/ 25
```

Bar graph

```
SIXFOLD MONI
TACHO ██████████
SPEED ████████
WATER ██████
INTAK ██████████
IN-MF ████████
IGNIT ██████
```

Present value

```
SIXFOLD MONI
TACHO 5230 rpm
SPEED 170 km/h
WATER 98 °C
INTAK 80 °C
IN-MF 1.20 hPa
IGNIT 15 deg
```

7) DIAGNOSIS (Fault Diagnosis mode)

Diagnosis mode will only show the number of the fault codes of the ECU.

< Note > It cannot indicate breakdown contents. In addition, it does not indicate the actual trouble code.

```
DIAGNOSIS
0
```

In this case the fault code is 0

8) OPTICAL COMM

The Rvit can be used to link up the the SBC I-D by infrared. The Rvit can simultaneously send 2 different readings to the SBC I-D.

< Note > The distance between the Rvit and SBC I-D has to be less than 3mm apart.

- * To change the information sent to the SBC I-D, press ENTER and use the UP/DOWN button to select the unit you would like to use.

```
OPTICAL COMM
CH1 TACHO
CH2 SPEED
```

9) UNIT CHANGE (Unit modification)

Injector flow rate time, the unit of air flow voltage and throttle voltage can be modified.

Please set the injector ms, air flow voltage and throttle voltage according to you vehicle specs. If the values are not accurate, the Rvit will not display the correct values.

Please refer to factory service manual for any additional information regarding the values eligible for modifications.

UNIT CHANGE

```

INJECT      ms
100%      20.0 ms
AIRFL      VOLT
100%      4.98 U
THROT      VOLT
100%      4.80 U

```

10) WARNING (Warning setting)

Warning value of each data can be set.

To set the unit of the warning, scroll down to SOURCE and press ENTER. Use the UP/DOWN button to choose the unit you would like to have the warning set on.

Warning and the buzzer can be turned on or off. To set press ENTER button and use UP/DOWN switch to select.

Warning can be set on both High and Low setting. Scroll to High/Low and press ENTER. Use the UP/DOWN button to set the warning values.

WARNING SET

```

WARNING     OFF
BUZZER      OFF
SOURCE      TACHO
HIGH 5000   RPM
LOW 5000    RPM

```

11) REC & PLAY (Record/playback)

The REC/PLAY function can record up to 6 items simultaneously. The items in the REC/PLAY function is the same as the Sixfold monitor. If you would like to change what is recorded, please return to Sixfold monitor screen and change.

Use the UP/DOWN button to select RECORD or REPLAY, press ENTER to select. Press ENTER again to stop recording. Use the LEFT button to return to REC/Replay and use the UP/DOWN button to choose and ENTER to select.

While in Playback mode, use the UP/DOWN button fast forward or rewind.

It was set with Sixfold monitor as follows

```
SIXFOLD MONI
TACHO 5230 rpm
SPEED 170 km/h
WATER 98 °C
INTAK 80 °C
IN-MF 1.20 hPa
IGNIT 15 deg
```

REC & PLAY Succeeded indication mode

```
REC&PLAY
REC 00:28
TACHO 5230 rpm
SPEED 170 km/h
WATER 98 °C
INTAK 80 °C
IN-MF 1.20 hPa
IGNIT 15 deg
```

12) CONTRAST (Contrast setting)

LCD (liquid crystal display) contrast can be set. With 0 it is the lightest and 100 is the darkest.

13) BRIGHT (Brightness control)

Back light brightness can be adjusted. With 0 it is the lightest and 100 is the brightest.

14) LANGUAGE (Display language)

"ENG1": English language is selected with 7 dot letters of English.

"ENG2": English language is selected with 5 dot letters of English.

"JPN1": Japanese language is selected with 7 dot letters of Japanese

"JPN2": Japanese language is selected with 5 dot letters of Japanese.

15) PEAK CLEAR (Peak clearing)

Master Peak clear. This function clears the Peak value of all of the different displays.

16) STROBO (Afterimage setting)

There is an afterimage of the needle guide meter and cannot be set. When ON is selected, there is an afterimage.

17) UNIT (Speed / temperature unit)

This sets the Speed and temperature unit of the Rvit.

When "km/h" is selected, the speed unit becomes km/h and the temperature unit becomes °C (metric).

When "MPH" is selected, the speed unit becomes MPH and the temperature unit becomes F (US standard).

18) RESET (Reset)

When "EXECUTE" is selected, all setting are reset to original values.

When "CANCELLATION" is selected, it returns to the menu.